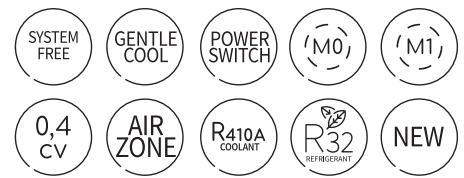


Duct unit



GENTLE COOL blower temperature setting for ultimate comfort

The GENTLE COOL fan temperature setting, accessible on the wired remote control PC-ARF1E, adjusts the min. fan blower temperature. There is minimal risk of condensation forming, which improves the air quality. It also stops any summer drafts.

Flexible installation

Our new duct units offer greater flexibility when it comes to installation. The electric box can be removed. The 100Pa model has a rear cooling connection so it can easily fit into small spaces, and the pump can be disconnected onsite.

Easy maintenance

Extracts up to 850 mm condensation. Filter is accessible from below or the side (0.4 to 6 hp).

M0/M1 fire safety compliance

Fire safety regulations now require the use of materials classified as M0/M1 for the indoor/outdoor insulation of Public Buildings (Article CH-32-36).

With our High-Capacity duct unit version (-F) solution you can meet Group 1 ERP requirements (Category 1 to 4); premises above 300m² or an area of less than 300m² serving several premises.

Compatible with Airzone solution

Thanks to its partnership with Airzone, Hitachi is able to offer you precision step-by-step temperature control.

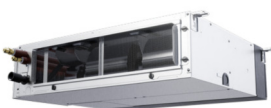
30% fresh air supply

All Hitachi duct units can work on 30% fresh air to provide the best quality and cleanest air.

Available in sizes 16 and 20 hp

The most extensive range on the market, from 1.1kW to 56 kW.

EXCLUSIVE



Slim duct unit 100 Pa – 1.1 to 4 kW

- Integrated and removable condensation extraction pump.
- Filter accessible from below or from the right side.
- Low-height: 197 mm.
- Cooler connections from the rear.
- Electric box (can be removed) – Air extraction from the rear or from below (optional).
- M1 insulation (suitable for CH35 ERP buildings).

Duct unit 150 Pa 4 to 16 kW

- Condensate extraction pump included.
- Extracted from the rear and below (optional).
- Optional motion sensor.
- Height: 240 mm.
- M1 insulation (suitable for CH35 ERP buildings).
- Electric box (can be removed, sizes 1.5 and 2 hp).
- Filter accessible from below or from the left or right side.

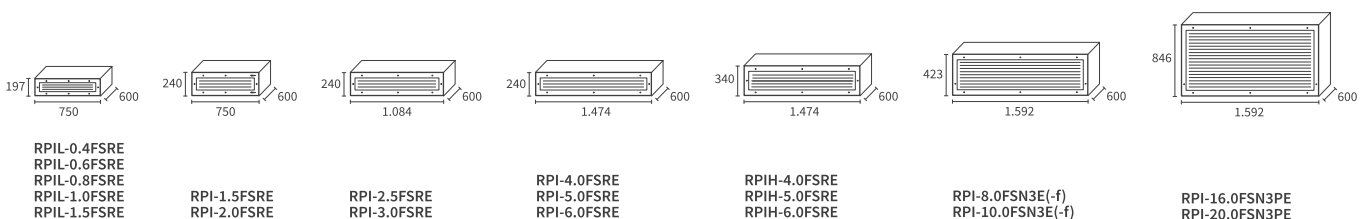
Duct unit 200 Pa 11 to 16 kW

- Condensate lift pump included.
- Extracted from the rear.
- Filter accessible from below or from the left or right side.
- M1 insulation (suitable for CH35 ERP buildings).

High-Pressure High-Capacity duct unit 22 to 56 kW

- M0 fire safety compliance on version (-F).
- Up to 220 Pa available static pressure.
- Sizes 8, 10, 16 and 20 hp.
- M1 insulation (suitable for CH35 ERP buildings).

Indoor units



Slim duct unit, height 197mm (up to 100Pa available pressure)

Indoor units	Unit	RPIL-0.4FSRE	RPIL-0.6FSRE	RPIL-0.8FSRE	RPIL-1.0FSRE	RPIL-1.5FSRE
Power (adjustable)	Hp	0.40	0.60	0.80	1.00	1.30 – 1.50
Rated power Cooling UTOPIA Prime & IVX	kW	not available	not available	2.00	2.50	3.60
Rated power Heating UTOPIA Prime & IVX	kW	not available	not available	2.20	2.80	4.00
Rated power Cooling SET FREE	kW	1.10	1.70	2.20	2.80	3.80 – 4.00
Rated power Heating SET FREE	kW	1.30	1.90	2.50	3.20	4.20 – 4.80
Rated power input (pv)	kW	0.02	0.02	0.02	0.03	0.03
Sound pressure in Cooling mode (pv / mv / gv) ⁽¹⁾⁽³⁾	dB(A)	22 / 23 / 24	23 / 25 / 27	23 / 25 / 28		25 / 29 / 30
Noise capacity (gv)	dB(A)	43	46	47		49
Min. airflow in Cooling mode (pv / mv / gv) (SP02) ⁽⁴⁾	m ³ /h	300 / 330 / 360	330 / 390 / 438	342 / 390 / 462		390 / 474 / 528
Rated static pressure (min-max)	Pa	15 (0~100)			25 (0~100)	
Condensing pump	-	yes (can be removed to use as a gravity-fed unit)				
Max. elevation	mm	850				
Diameter of pipes (Liq / Gas)	inches	1/4 - 1/2				
Condensate outlet diameter (ext)	mm	32				
Dimensions (H x L x D)	mm	197 x 750 x 600				
Weight	kg	23				
Power supply	-	1~ 230V 50Hz				
Cable width (EN 60 335-1) ⁽⁴⁾	mm ²	3 x 0.75				
Max. current	A	5		5		5

Compact duct unit (up to 150Pa available pressure)

Indoor units	Unit	RPI-1.5FSRE	RPI-2.0FSRE	RPI-2.5FSRE	RPI-3.0FSRE	RPI-4.0FSRE	RPI-5.0FSRE	RPI-6.0FSRE
Power (adjustable)	Hp	1.50	2.00	2.50	3.00	4.00	5.00	6.00
Rated power Cooling UTOPIA Prime & IVX	kW	3.60	5.00	5.60	7.10	10.00	12.50	14.00
Rated power Heating UTOPIA Prime & IVX	kW	4.00	5.60	6.30	8.00	11.20	14.00	16.00
Rated power Cooling SET FREE	kW	4.00	5.60	7.10	8.00	11.20	14.00	16.00
Rated power Heating SET FREE	kW	4.80	6.30	8.50	9.00	12.50	16.00	18.00
Sound pressure in Cooling mode (pressure) (pv / mv / gv) ⁽¹⁾⁽³⁾	dB(A)	29 / 31 / 34*	27 / 29 / 29*	28 / 30 / 30*	29 / 31 / 31*	32 / 35 / 37*	33 / 35 / 38*	33 / 36 / 39*
Sound pressure	dB(A)	53*	55*	56*	57*	62*	65*	66*
Airflow in Cooling mode (pv/mv/gv)	m ³ /h	540 / 720 / 900*	660 / 840 / 1020*	1020 / 1200 / 1380*	1080 / 1320 / 1560*	1440 / 1740 / 2160*	1860 / 2130 / 2400*	1860 / 2220 / 2580*
Rated static pressure (min-max)	Pa	25 (0~150)			37 (0~150)		50 (0~150)	
Condensing pump	-	yes						
Max. elevation	mm	850						
Diameter of pipes (Liq / Gas)	inches	1/4 - 5/8			3/8 - 5/8			
Condensate outlet diameter (ext)	mm	32						
Dimensions (H x L x D)	mm	240 x 750 x 600		240 x 1084 x 600			240 x 1474 x 600	
Weight	kg	25		30			36	
Power supply	-	1~ 230V 50Hz						
Cable width (EN 60 335-1) ⁽²⁾	mm ²	3 x 0.75						
Max. current	A	5		5	5	5		5

High-Pressure duct unit (up to 200 Pa available pressure)

Indoor units	Unit	RPIH-4.0FSRE	RPIH-5.0FSRE	RPIH-6.0FSRE
Power (adjustable)	Hp	4.00	5.00	6.00
Rated power Cooling UTOPIA Prime & IVX	kW	10.00	12.50	14.00
Rated power Heating UTOPIA Prime & IVX	kW	11.20	14.00	16.00
Rated power Cooling SET FREE	kW	11.20	14.00	16.00
Rated power Heating SET FREE	kW	12.50	16.00	18.00
Sound pressure in Cooling mode (pressure) (pv / mv / gv) ⁽¹⁾⁽³⁾	dB(A)	32 / 35 / 37*	33 / 35 / 38*	33 / 36 / 39*
Sound pressure	dB(A)	62*	65*	66*
Airflow in Cooling mode (pv/mv/gv)	m ³ /h	1560 / 1860 / 2160*	1800 / 2100 / 2400*	1800 / 2100 / 2400*
Rated static pressure (min-max)	Pa	50 (0~200)		
Condensing pump	-	yes		
Max. elevation	mm	850		
Diameter of pipes (Liq / Gas)	inches	3/8 - 5/8		
Condensate outlet diameter (ext)	mm	32		
Dimensions (H x L x D)	mm	340 x 1474 x 600		
Weight	kg	43		
Power supply	-	1~ 230V 50Hz		
Cable width (EN 60 335-1) ⁽²⁾	mm ²	3 x 0.75		
Max. current	A	5		5

⁽¹⁾ Sound levels (pressure) are measured in an anechoic chamber at 1.50 m under the unit (without a ceiling under the unit), with an extraction duct at 1 m and discharge duct at 2 m.

⁽²⁾ Data shown is for indication purposes only. It is the installer's responsibility to ensure that these cable widths meet the needs of the facility.

⁽³⁾ Ultra high-speed access is possible with remote controls PC-ARFP1E (or PC-ARFG-E available second half of 2021) and PC-ARH1E.

⁽⁴⁾ SP: external static pressure (defined with the optional function "C5" on the remote control: 00: standard, 01: external static high-pressure, 02: external static low-pressure)

* Provisional data (to be confirmed).

High-Capacity duct unit (up to 220 Pa available pressure) (sizes 16 and 20 hp: unique on the market)

Indoor units	Unit	High-pressure		High-power	
		RPI-8.0FSN3E(-F)*	RPI-10.0FSN3E(-F)*	RPI-16.0FSN3PE(-F)*	RPI-20.0FSN3PE(-F)*
Power (adjustable)	Hp	8.00	10.00	16.00	20.00
Rated power Cooling Micro VRF IXV COMFORT	kW	20.00	25.00	40.00	50.00
Rated power Heating Micro VRF IXV COMFORT	kW	22.40	28.00	44.80	56.00
Rated power Cooling SET FREE	kW	22.40	28.00	45.00	56.00
Rated power Heating SET FREE	kW	25.00	31.00	50.00	63.00
Sound level in Cooling mode (pressure) (pv / mv / gv) ⁽¹⁾⁽³⁾	dB(A)	51 / 54 / 54	52 / 55 / 55	53 / - / 56	54 / - / 57
Sound pressure	dB(A)	77	78	79	80
Airflow in Cooling mode (pv/mv/gv)	m ³ /h	3570 / 3960 / 3960	4056 / 4500 / 4500	7200 / - / 7920	8220 / - / 9000
Rated static pressure (min-max)	Pa	200 (180 - 220)		180 (220)	
Dehumidification	l/h	7.70	8.80	15.00	17.00
Condensing pump	-	no			
Max. elevation	mm				
Cooling pipe diameter (Liq / Gas)	inches	3/8 - 3/4	3/8 - 7/8	3/8 - 3/4 (requires a E-162SN4)	3/8 - 7/8 (requires a E-242SN3 Normal)
Condensate outlet diameter (ext)	mm	32			
Dimensions (H x L x D)	mm	423 x 1592 x 600		846 x 1592 x 600	
Weight	kg	85	87	171	175
Power supply	-	1~ 230V 50Hz			
Cable width (EN 60 335-1) ⁽²⁾	mm ²	3 x 2.50		2 x (3 x 2.50)	

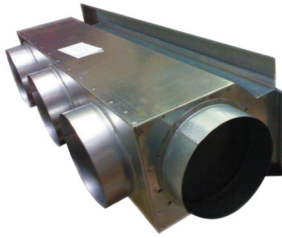
(1) Sound pressure is measured under the following conditions: at 1.50 m below the unit (no ceiling under the unit), with an extraction duct at 1 m and a discharge duct at 2 m.

(2) Data shown is for indication purposes only. It is the installer's responsibility to ensure that these cable widths meet the needs of the facility and current standards.

(3) High-speed access is possible with remote controls PC-ARFP1E and PC-ARH1E.

* Version (-F) refers to the M0 fire safety-compliant model.

Plenums (stand-alone)



Type of Plenum	Number of outputs / diameter (mm)	Part number	Compatibility
Blower and intake	2 / Ø 200	PL-RPIL-FSRE	RPIL-0.4~1.5FSRE
Blower and intake	3 / Ø 200	PL-RPI1.5/2FSRE	RPI-1.5~2.0FSRE
Blower and intake	5 / Ø 200	PL-RPI2.5/3FSRE	RPI-2.5~3.0FSRE
Blower and intake	5 / Ø 200	PL-RPI4-6FSRE	RPI-4.0~6.0FSRE

You can have multiple contacts with the connector PCC-1A: progress report, error report, thermostat control, remote "Start/Stop".

Controls and compatible accessories (see the tab VRF TWIN Controls)



Simple wired controller
PC-ARH1E



Infrared controller
PC-AWR



Intuitive multifunction cable control
PC-ARFP1E
(PC-ARFG-E available second half of 2021)



Motion sensor
All sizes of duct unit
SOR-MSK



Remote sensor
THM-R2AE



Infrared receiver
PC-ALHZ1 (external)



Multi-tenant card
PC-AMTB



Connectors
PCC-1A



Gravitational condensation unit connection kit
D-DGK15R



Kit extracts from below
D-ICA15R → RPIL (100 Pa)
D-ICA20R → RPI 1.5 to 2.0 hp (150 Pa)
D-ICA30R → RPI 2.5 to 3.0 hp (150 Pa)
D-ICA60R → RPI 4.0 to 6.0 hp (150 Pa)